

# Auto Circulation

I Really Like It!

I Like It But With Some Changes

Neutral

I Don't Like It. Needs Improvement - How?

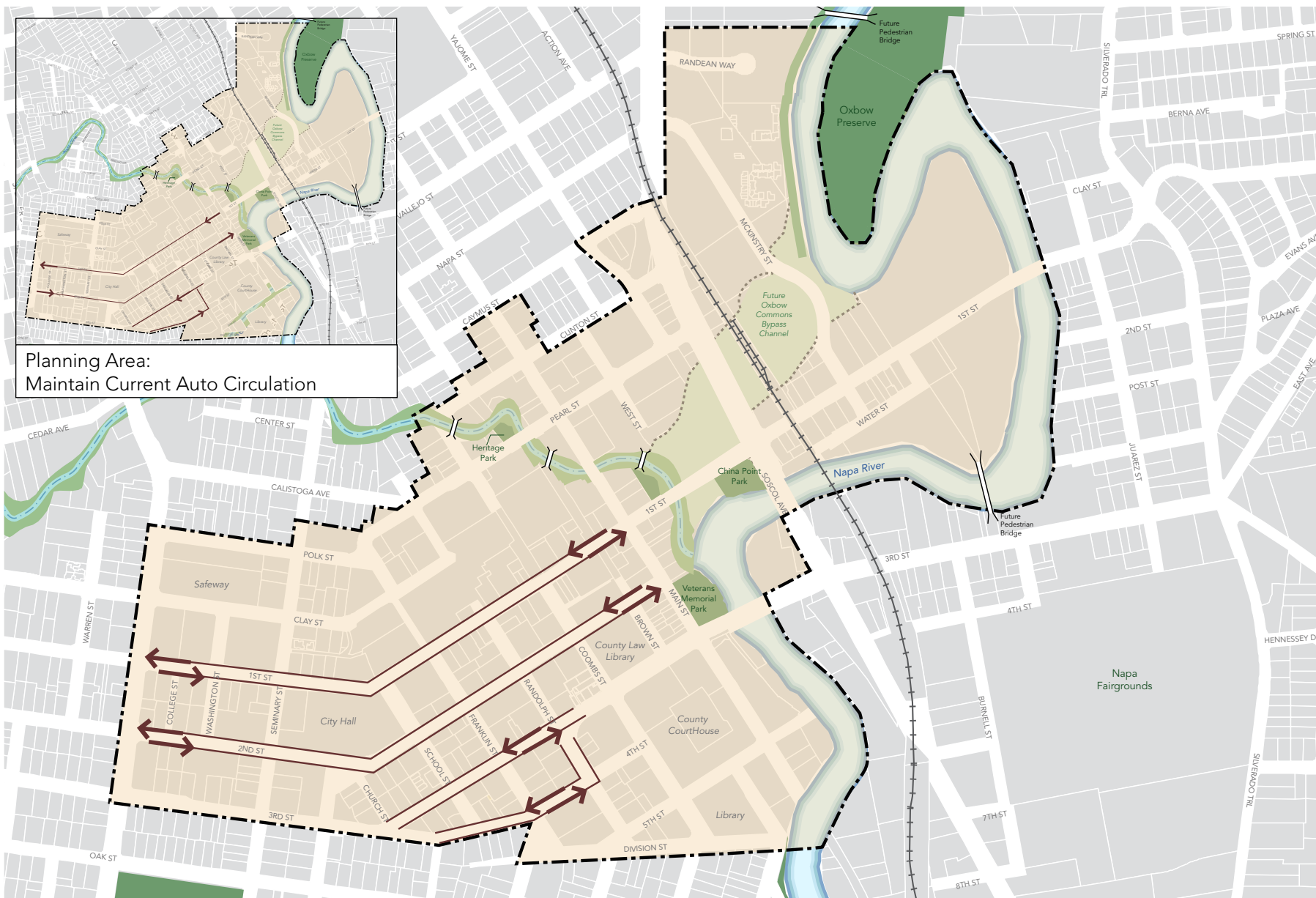
I Really Don't Like It - Why?

The Downtown Specific Plan Steering Committee, considering comments from the first Community Workshop, stakeholders meetings as well as an online survey of over 800 community members, has identified Downtown's one-way street circulation as something they would like to see changed. Some of the reasons why two way streets within the Downtown are favored:

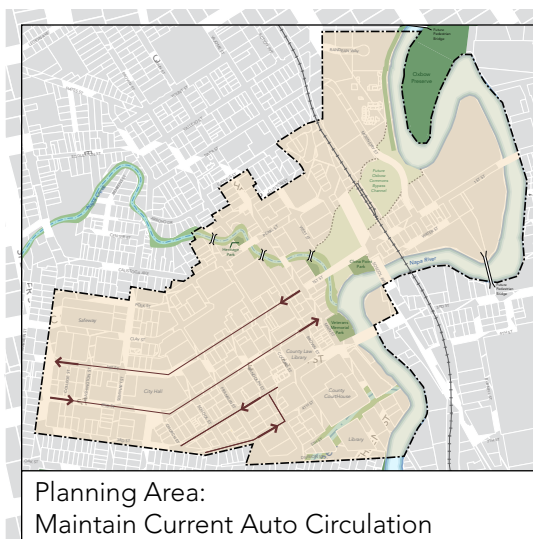
- One-way streets are not intuitive and are disorienting.
- One-way streets create a circuitous and confusing circulation pattern, particularly for visitors.
- Some businesses located on one-way streets have poor access or less exposure to passing motorists.
- Narrower two-way streets have slower traffic, improving safety.
- Two-way streets result in less use of fuel, fewer miles of travel, and less automobile emissions from having to drive the loop around downtown.
- Two-way streets eliminate wrong way travel and result in fewer head-on collisions.
- Two-way streets are favored by transit users for improved transfers between routes.
- Favored by Napa transit operator (VINE) by increasing recognition and visibility of routes.

Top considerations from a public neighborhood meeting November 12, 2009 for review of any traffic circulation options west of Jefferson Street include:

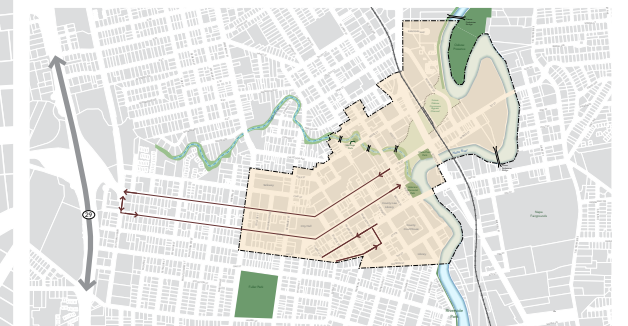
- Provide safe vehicular, bicycle and pedestrian travel.
- Maintain emergency response times to Browns Valley.
- Ensure liveable streets for residents.
- Slow traffic down.
- Minimize impacts to historic homes.
- Make it easy to find your way.



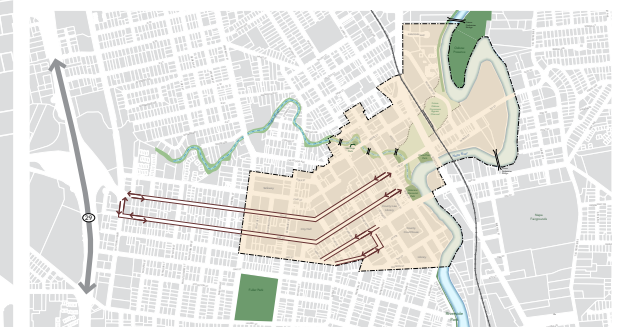
Planning Area: Convert One-Way Streets to Two-Way Streets



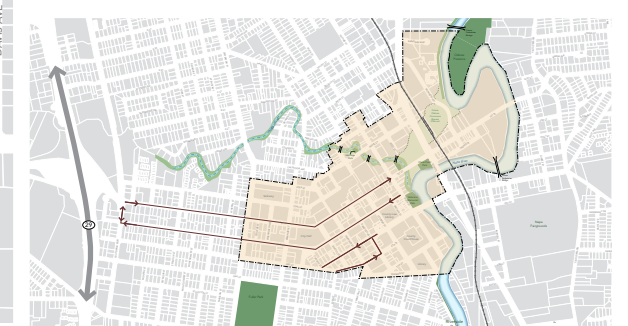
## EIR Review Alternatives West of Jefferson Street



Outside Planning Area: Existing Vehicular Circulation



Outside Planning Area: Change to Two-Way 1st and 2nd St.



Outside Planning Area: Reverse Existing Directions on 1st and 2nd St.

