



A Tradition of Stewardship
A Commitment to Service

County Facilities Fact Sheet & Master Plan Summary September 23, 2009

Napa County government employs approximately 1,400 people, serves the approximately 135,000 residents of Napa County (including residents of the cities), and operates out of multiple buildings and facilities in downtown Napa and elsewhere in the County.

Existing County Facilities

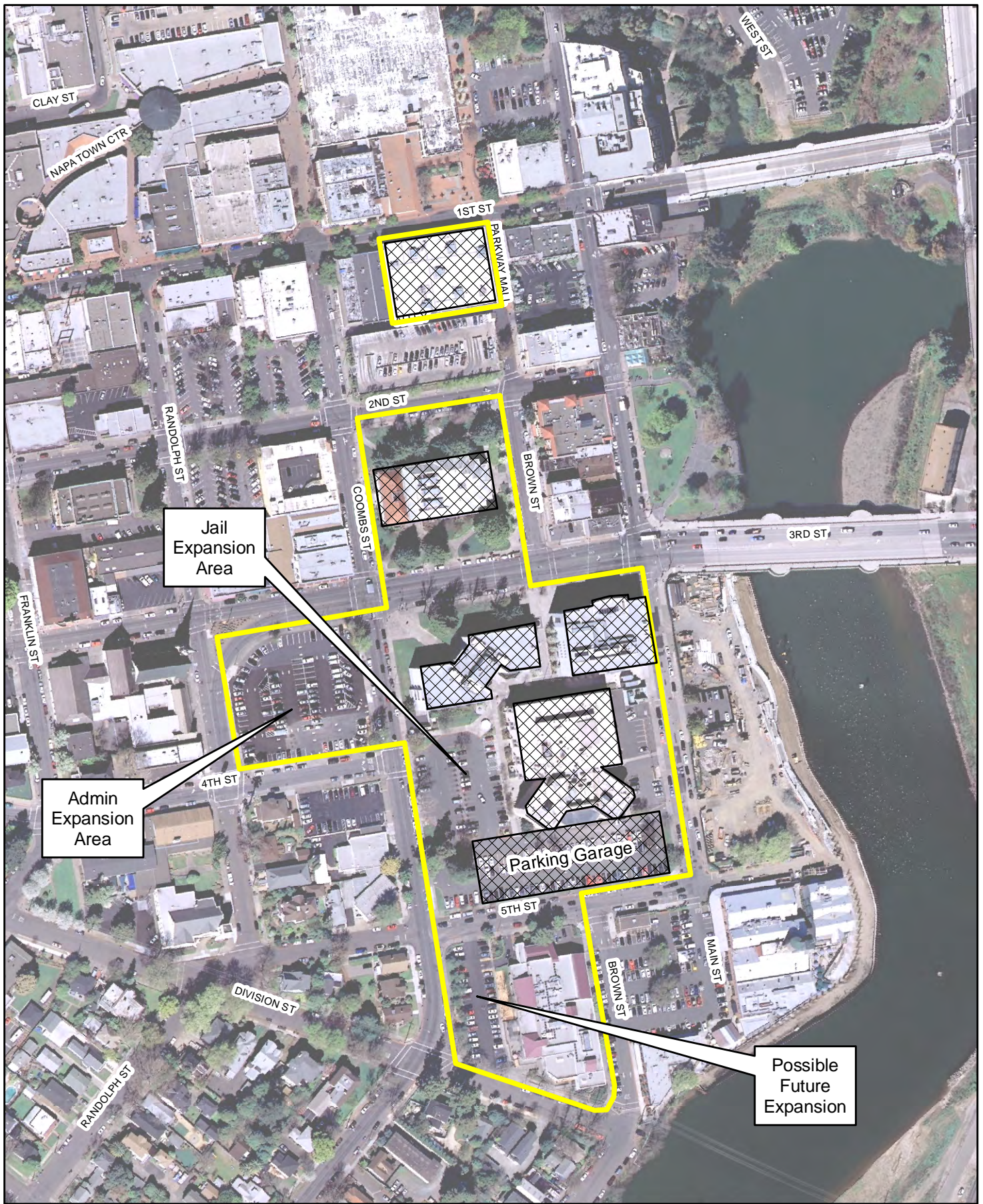
Napa County government occupies a campus in downtown Napa consisting of two court houses, a jail, a library, administrative office space, law and justice offices, a corporation yard (near Copia), and off-street (structured and unstructured) parking. (See figure, attached.) In addition, the County occupies the Health and Human Services (HHS) campus, the Sheriff's facility, the airport, office buildings at 650 Imperial Way and Soscol Suites 1, 3 & 4, and corporation yards elsewhere in the City of Napa and the County. Existing County office space (not including the Sheriff's facility or the airport) totals approximately 282,000 gsf. A Facility Space Needs Analysis was completed in August 2008 and resulted in the following priorities:

Master Plan Priorities

- Construct a new 366-bed jail in phases (phase one will be west of the current jail, and phase two will be on the site of the hall of justice), with expansion capacity to 500 beds. (See separate jail fact sheet for more information.)
- Replace the HHS campus on its existing site in phases (126,000 gsf existing & 150,000-180,000 gsf proposed)
- Construct a new administration building on the Sullivan Block accommodating the Board of Supervisors, County Executive Office, County Counsel, Auditor, Treasurer, Assessor, Planning/Building, Public Works, Environmental Management, Agricultural Commissioner (135,000 gsf total).
- Renovate or replace the existing administration building to provide for a law and justice center accommodating Child Support Services, Probation, District Attorney, and Public Defender (58,000 gsf total)
- Surplus the Carithers Building (51,000 gsf), the Imperial Way building (30,000 gsf) and the Water Street property (2.2 acres); reserve the Library site for potential future expansion.

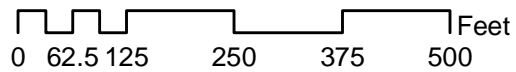
Next Steps

1. Develop schematic plans for downtown and HHS campuses by January 2010.
2. Develop construction phasing strategy by April 2010.
3. Complete financing and debt capacity study by December 2010.
4. Surplus unneeded property based on phasing/financing plan (date TBD).



County Campus - Sept. 2009

Disclaimer: This map was prepared for informational purposes only. No liability is assumed for the accuracy of the data delineated herein.



Horizontal Datum: NAD 83, CA State Plane Coordinates, Zone II, feet

County of Napa
Conservation Division
Revised Date: 09/2009