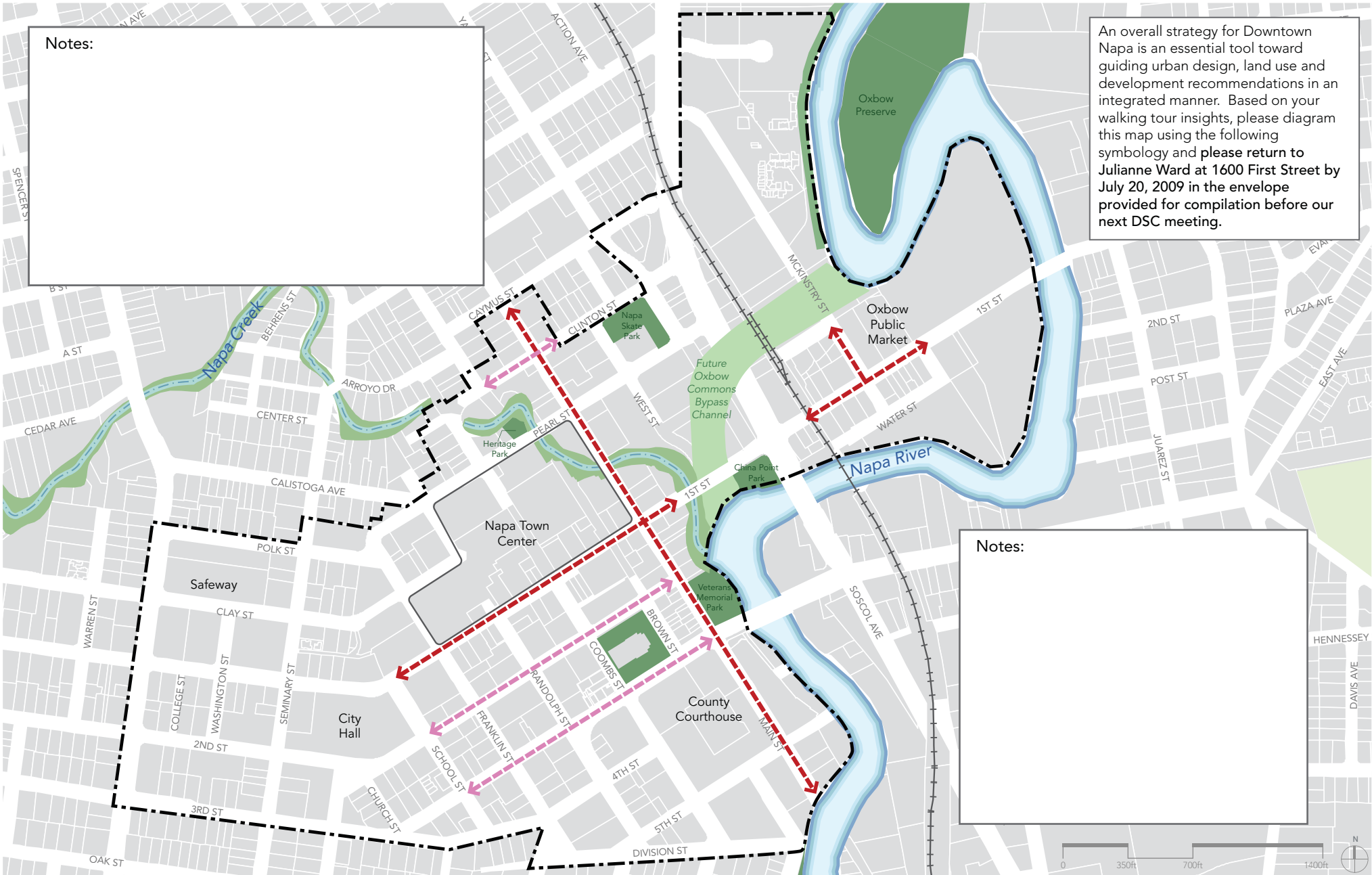


Notes:

An overall strategy for Downtown Napa is an essential tool toward guiding urban design, land use and development recommendations in an integrated manner. Based on your walking tour insights, please diagram this map using the following symbology and please return to Julianne Ward at 1600 First Street by July 20, 2009 in the envelope provided for compilation before our next DSC meeting.



Notes:

- Planning Area
- Water
- Proposed Primary Retail Corridor
- "Top" Bicycle Connections
- 2 "Top" Gateways
- Good New Location for Hotel
- Parcels
- Railroad
- Proposed Secondary Retail Corridor
- "Top" Pedestrian Connections
- New or Improved Park
- Park
- Residential Office Emphasis
- Revised Auto Connection
- 3 "Top" Streetscape Improvements
- Other Open Space
- Entertainment Emphasis
- View Corridor

DSC Homework Assignment #2: Downtown Strategy Ideas



DSC HOMEWORK ASSIGNMENT #2: DOWNTOWN STRATEGY IDEAS

An overall strategy for Downtown Napa will be an essential tool toward guide urban design, land use and development recommendations in a holistic, efficient manner.

We would like you to start applying aspects of the vision "on the ground" and begin a dialogue about various approaches to Downtown land use and transportation strategies.

Directions:

Based on your walking tour insights and thoughts, we'd like you to diagram the map on the other side using the following symbology.

KEY STRATEGY ELEMENTS



Retail Corridors and Town Center
Draw red line along street

The following retail corridors were identified in the 2004 Downtown Mixed Use Study, and First and Main Streets have also been discussed by you as retail storefront streets. Consider whether these are the appropriate boundaries for emphasizing retail uses, and whether there are other such streets. Identify are other street segments that should have a retail emphasis.



Residential and/or Office Emphasis
Draw box around parcel/block and dot inside

Highlight any areas of Downtown where you think the emphasis should be on residential, residential- office or office uses.



Entertainment Uses
Draw box around parcel/block and hatch lines inside

Considering the variety of nighttime commercial entertainment uses, from theaters to nightclubs, where do entertainment uses best belong?



Gateways
Draw a thick, dashed circle

Gateways, which may be special monuments, landscaping, arches, etc. create a sense of arrival for residents and visitors. Where are the top 2 gateways to Downtown?



Bicycle and Walking Connections
Draw line with arrowheads for bicycle, and a line of circles for walking connections

The Downtown Plan process to date has identified much support for improving bike/walking connections. The Downtown Plan is a good opportunity to consider providing a more coordinated system in the Downtown Area:

Existing bike connections:

- Onstreet signed bicycle route: Seminary Street
- Onstreet striped bike lane on Third Street bridge
- Off street bike and ped path: the Riverfront promenade from Brown to near First

Future:

- City and Countywide Bike Plans differ but identify all or portions of First, Second, Main, Coombs and Franklin as future signed routes only (no bike lanes)
- The City's Oxbow Commons Bypass plan also includes off street bike and ped paths that connect McKinstry Street under Soscol Ave to First Street and to the end of West Street.

What is/are the best streets for future bike routes or lanes and where should we consider new bicycle trails? Where are added pedestrian connections needed?



Auto Circulation Change
Draw a zig-zag line.

There is much interest in making it "easier to get around" downtown. The Town Center has eliminated several street connections. Further, the First/Second and Third/Fourth one way couplets are confusing to many. What are highest priority auto changes you think should be explored? Use zig zags to indicate new streets or revised circulation.



Intersection Improvements
Draw a square around intersection

New and improved crosswalks at key intersections can provide greater visibility while enhancing safety and connections for pedestrians. If up to 3 intersections can be improved, which are they?



Streetscape Improvements
Write a line of "S" characters along the street or portion of street

Streetscape improvements, such as narrowing travel lanes, bulbouts, parking, and street trees and support a safe, attractive and pedestrian-friendly environment. Where are the top 3 streets that need streetscape improvement?



New or Improved Parks, Plazas or Open Space
Write the letter "P"

New or improved parks or plazas will be considered as part of the Plan. What would be your 2 highest priority improvements of an existing park or Plaza? Is a new plaza/park needed? If so, where might such civic space/social gathering place best be provided?



View Corridors
Write "V" at the position looking into the view corridor

Are there particular views from public places that you are aware of that are important to retain?



Proposed Location for New Hotels
Write "H" on your recommended location

Where are the best location(s) downtown for additional hotels? (Are there areas of Downtown where hotels should not be emphasized or allowed?)